

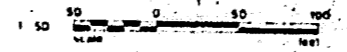
SPANISH ISLES PLAT II

LYING IN SECTION 6, TOWNSHIP 47 SOUTH, RANGE 47 EAST, PALM BEACH COUNTY, FLORIDA
 BEING A REPLAT OF A PORTION OF PALM BEACH FARM COMPANY PLAT NO. 3, PLAT BLY 2
 PAGES 45 - 54, 12/14/1978, AS FOUND AMONG THE PUBLIC RECORDS OF PALM BEACH COUNTY, FLORIDA
 (A CERTAIN 30 FOOT WIDE ROAD RIGHT-OF-WAY THEREIN BEING VACATED
 IN OFFICIAL RECORD BOOK 2909, PAGE 1305)
 MARCH, 1979

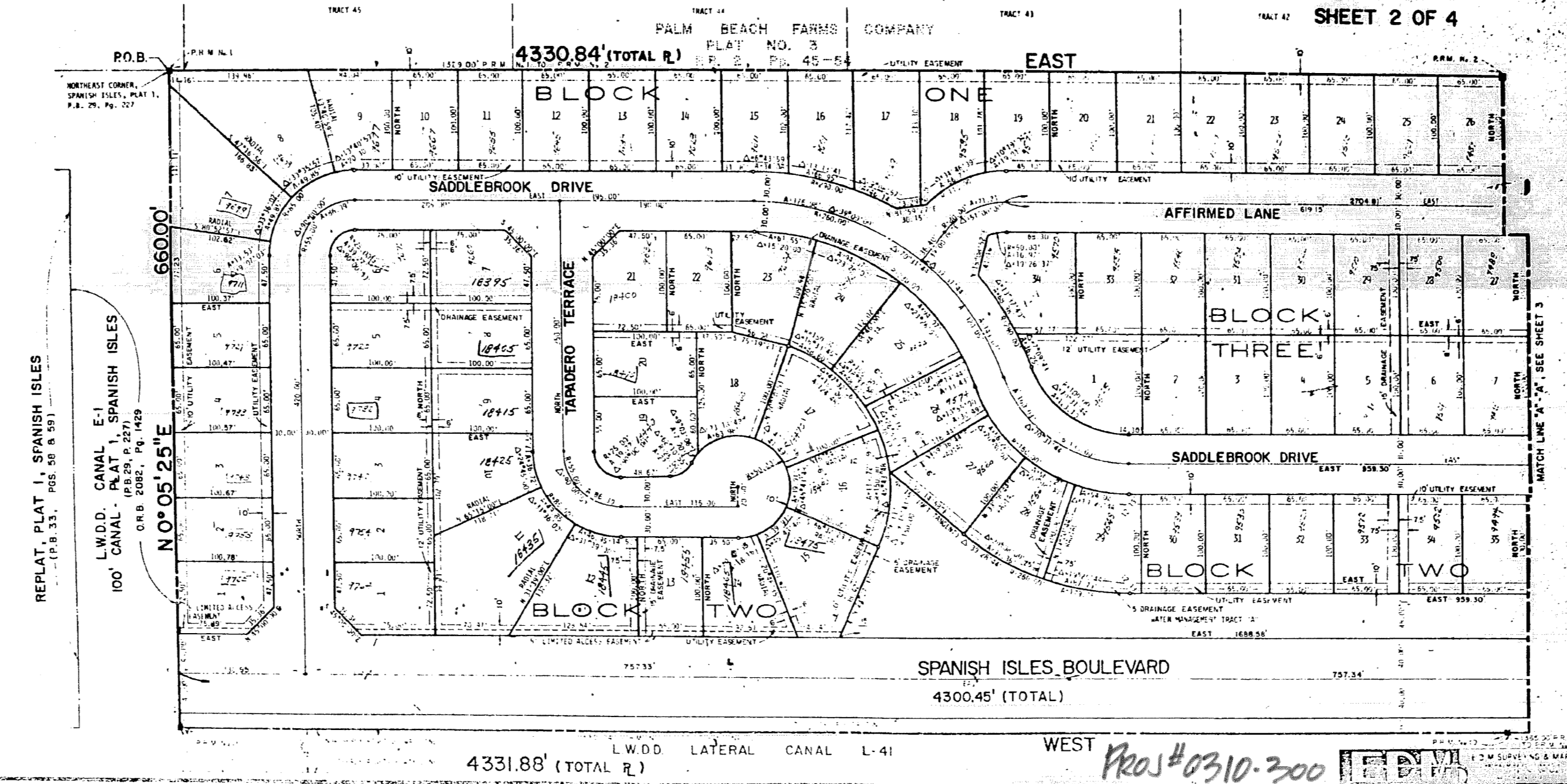
37 21

21

STATE OF FLORIDA
 COUNTY OF PALM BEACH
 THIS PLAT WAS FILED FOR
 RECORD AT
 THE CLERK'S OFFICE OF
 SAID COUNTY ON THE 21ST DAY OF
 MARCH 1979, IN OFFICIAL RECORD
 BOOK 2909, PAGE 1305
 AND
 JOHN B. JAMES, CLERK
 COUNTY CLERK



SHEET 2 OF 4



REPLAT, PLAT I, SPANISH ISLES
 (P.B. 33, PGS. 56 & 57)

L.W.D.D. CANAL E-1
 100' CANAL - PLAT I, SPANISH ISLES
 (P.B. 29, P. 27)
 O.R.B. 2082, PG. 1429
 N 0° 05' 25" E

11666